

# **LABORATORY FOR TESTING EMISSION, NOISE, WASTE AND SURFACE WATER IN THE ENVIRONMENT**

## **CONDITIONS FOR SERVICE EXECUTION**

### **Measurement of the emission of the waste gases in the air**

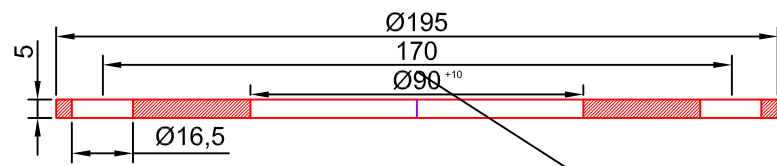
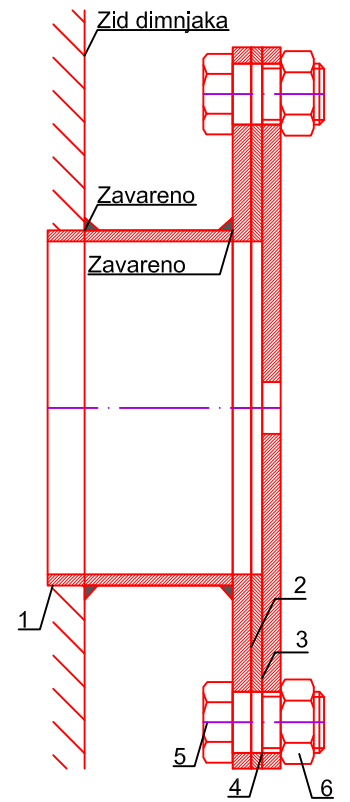
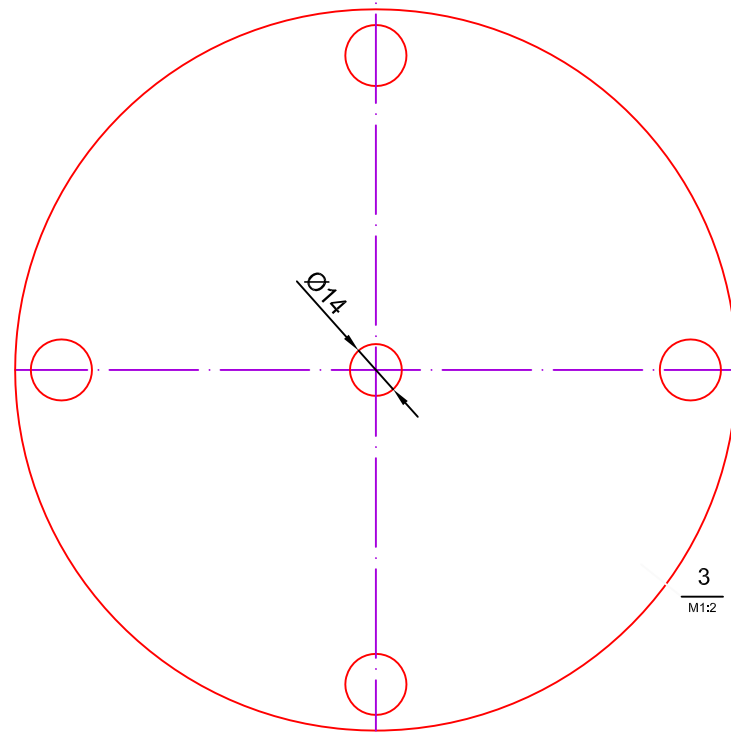
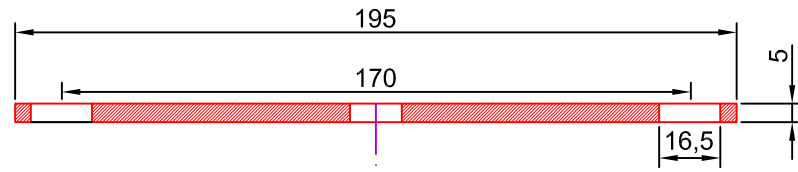
The measurement mustn't be carried out at the air temperature lower than  $-5^{\circ}\text{C}$  and higher than  $+40^{\circ}\text{C}$  and also during intense rain fall.

The emission of the waste gases in the air is being measured on the stack itself (behind the refinement device, if there is one). The access to the sampling spot and the sampling spot itself must be safe for the measurement to be executed. The size of the slot should be considered so that the probe could pass through the stack slot.

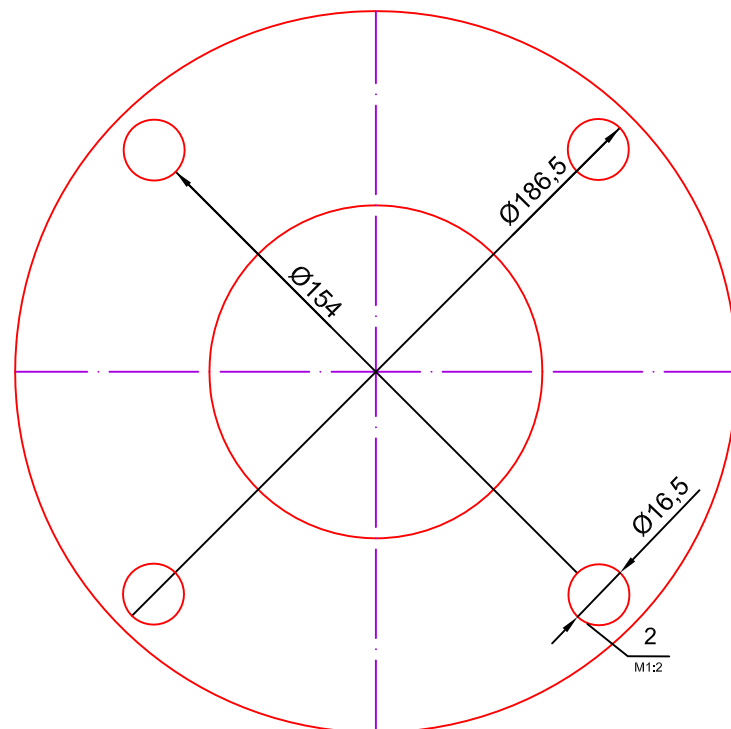
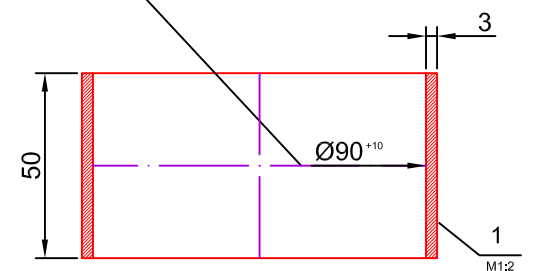
The client is obligated to install the slot on the sampling spot in accordance with SRPS ISO 10780:2010 (for gas matter sampling) or to install the tool for probe something, according to the SRPS ISO 9096:2010 (for the dust matter sampling). The access to the sampling spot and the spot itself must be safe for the measurement to be executed.



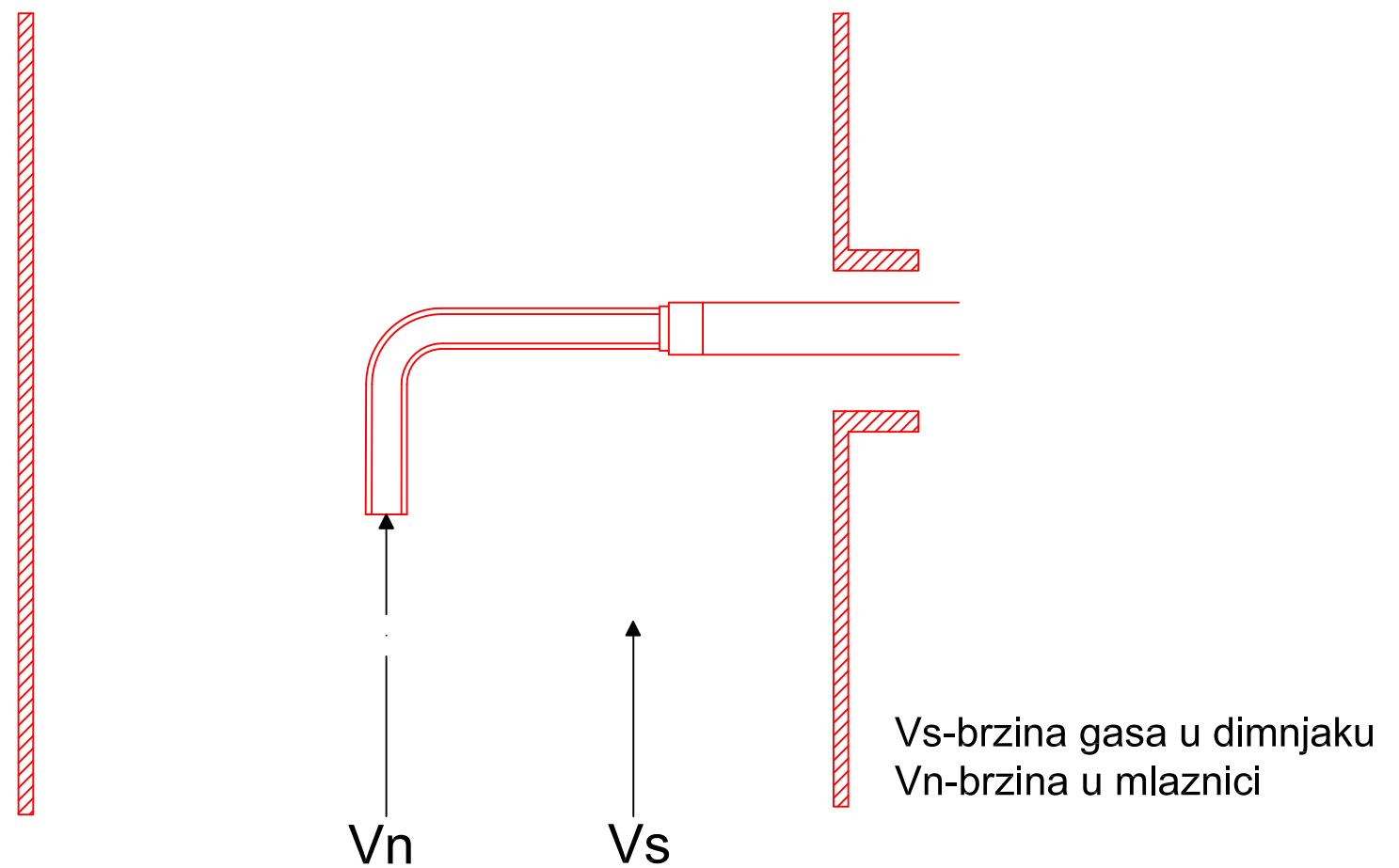
# TOOLS FOR RECEIVING THE PROBE



Kotu  $\text{Ø}90^{+10}$  obavezno ispoštovati!

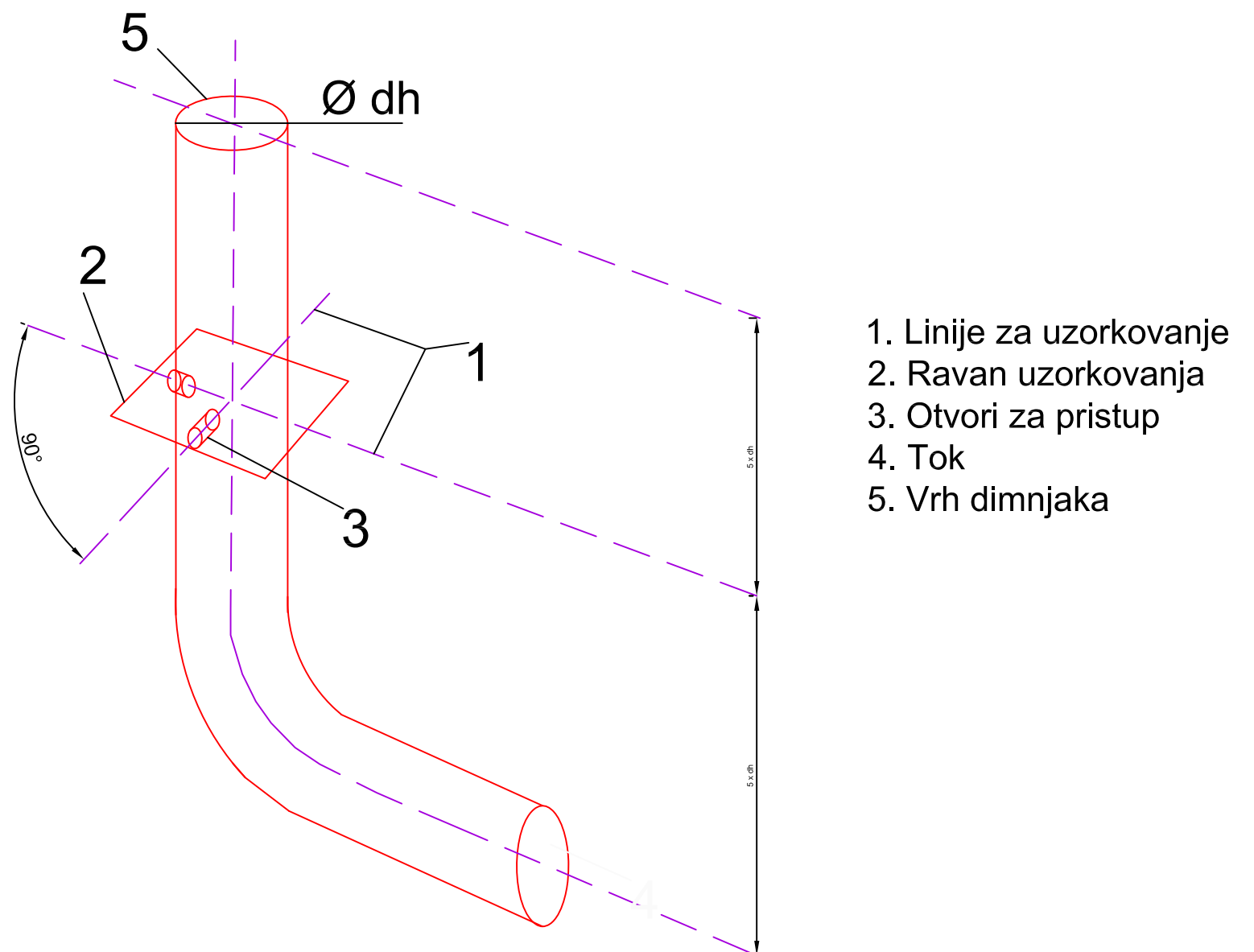


# THE LOOK AND THE POSITION OF THE MEASURING POINT

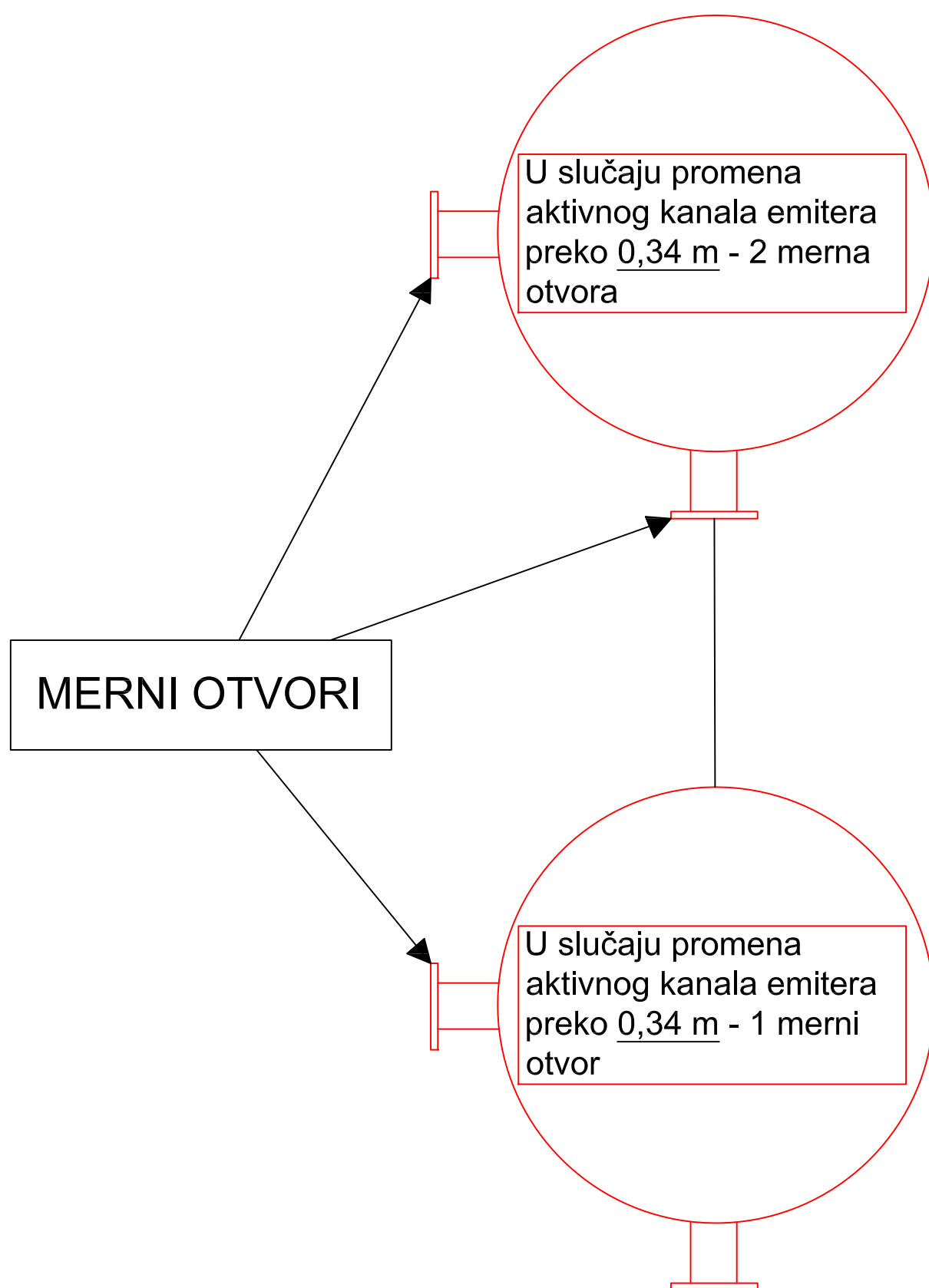


Hidraulični prečnik -  $d_h$  karakteriše dimenzije poprečnog preseka dimnjaka.

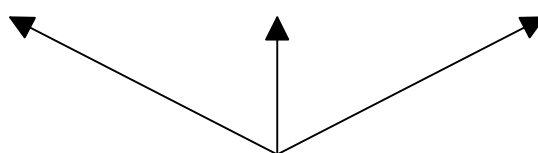
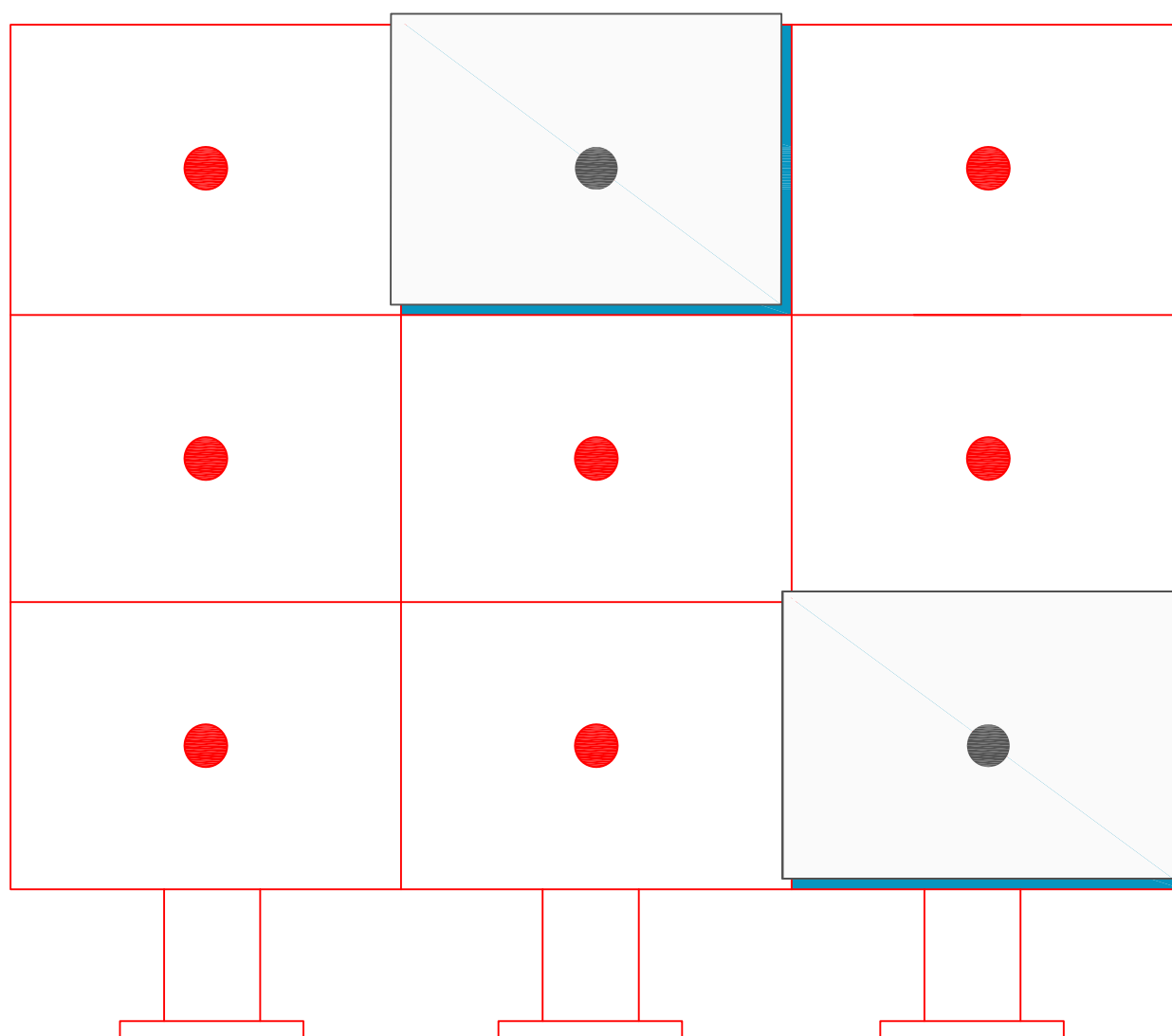
Ravan uzorkovanja - Ravan normalna na središnu liniju dimnjaka u položaju za uzorkovanje.



# THE POSITION OF THE OPENINGS IN CASE WHEN THE CHIMNEY HAS THE ROUND SHAPE



# THE POSITION OF THE OPENINGS IN CASE WHEN THE CHIMNEY HAS THE RECTANGULAR SHAPE



MERNI OTVORI